

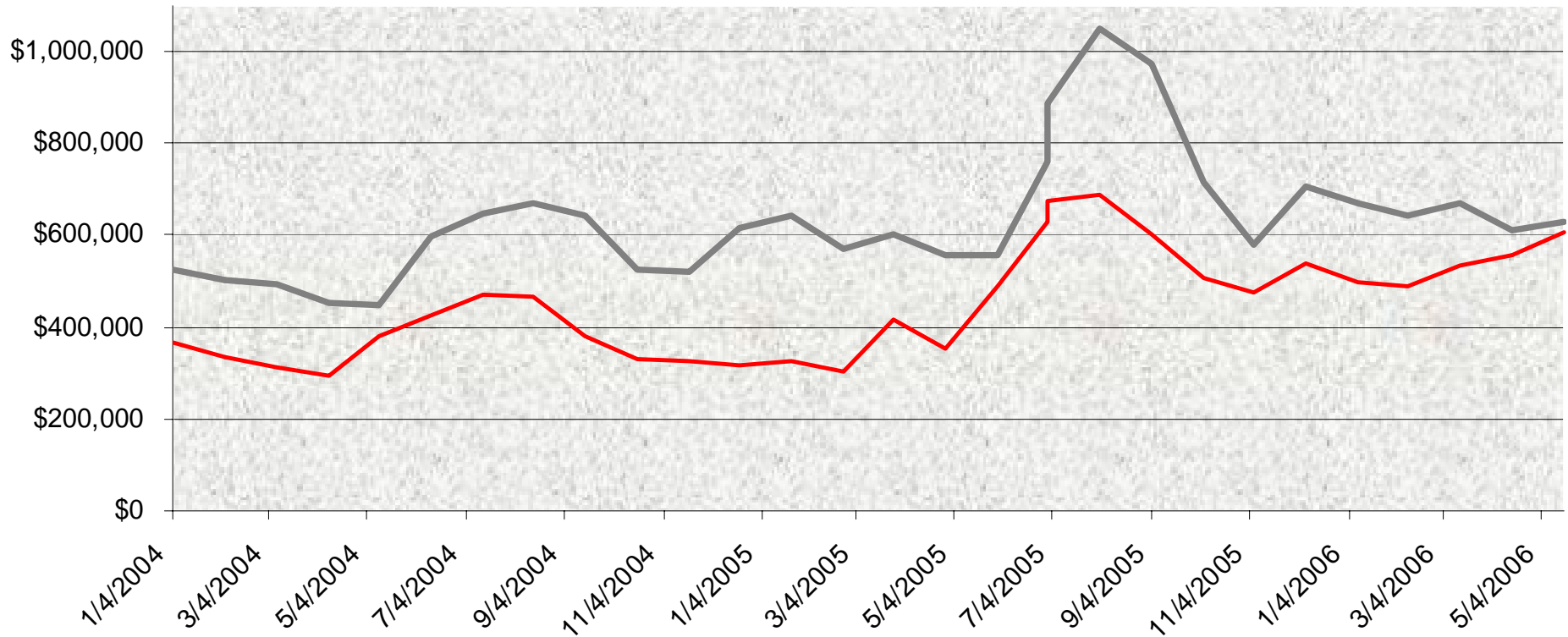
City of Nixa

Revenue vs. Power Cost

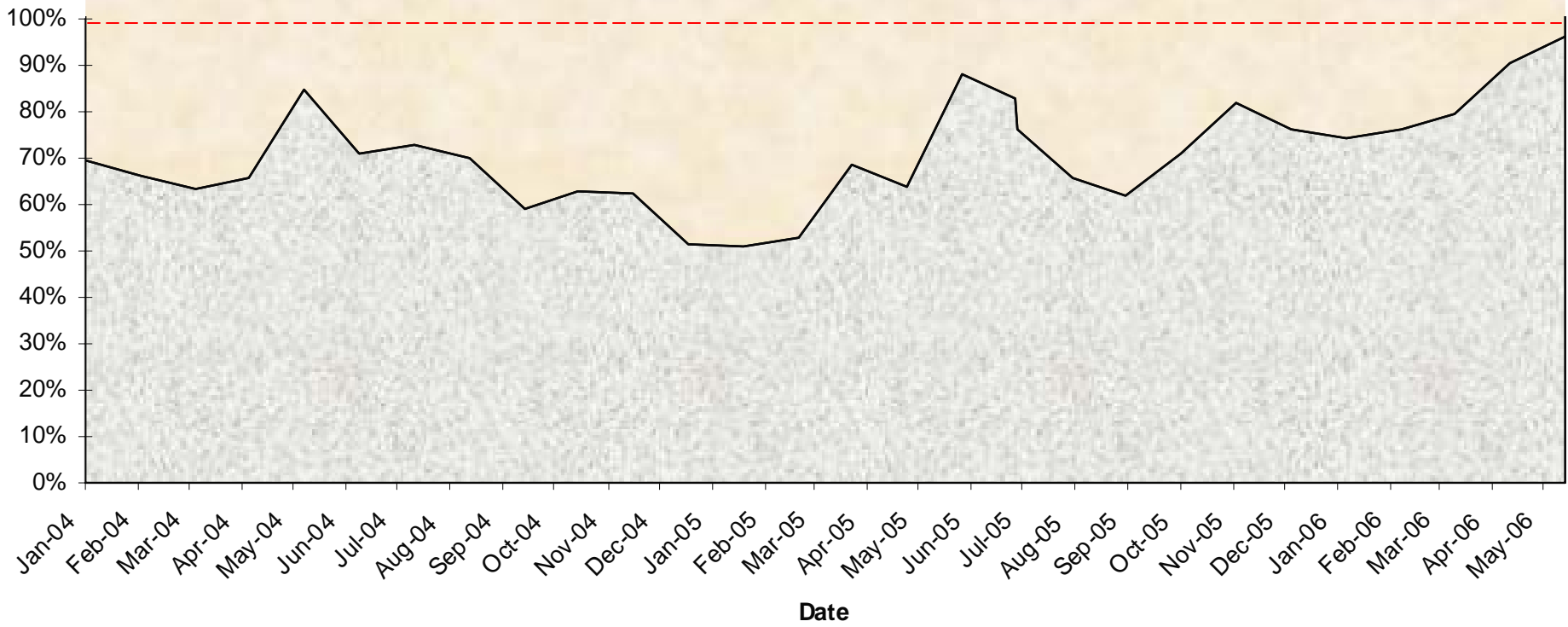
August 9, 2006

Nixa Revenue and Power Cost

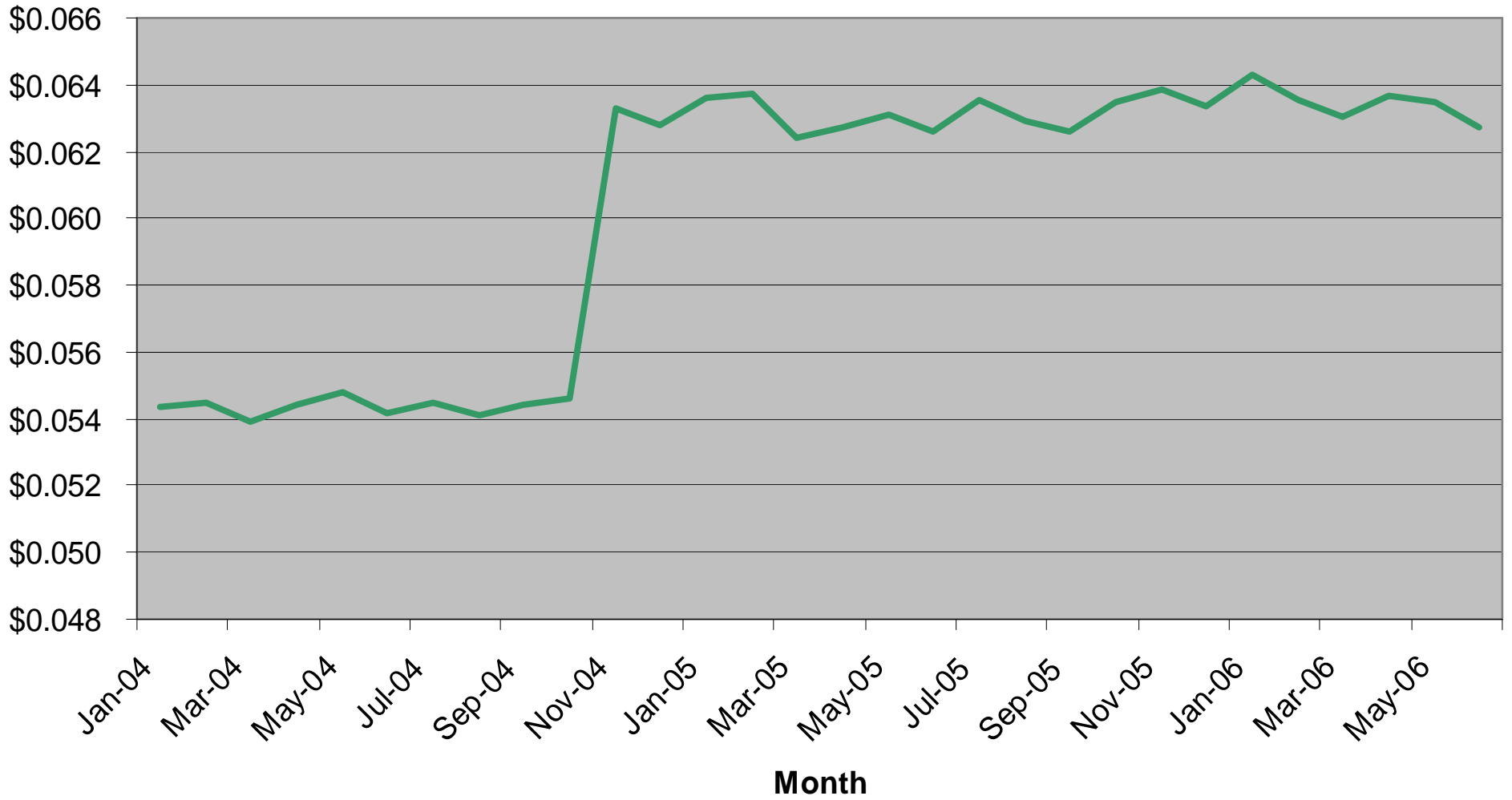
Power Revenue



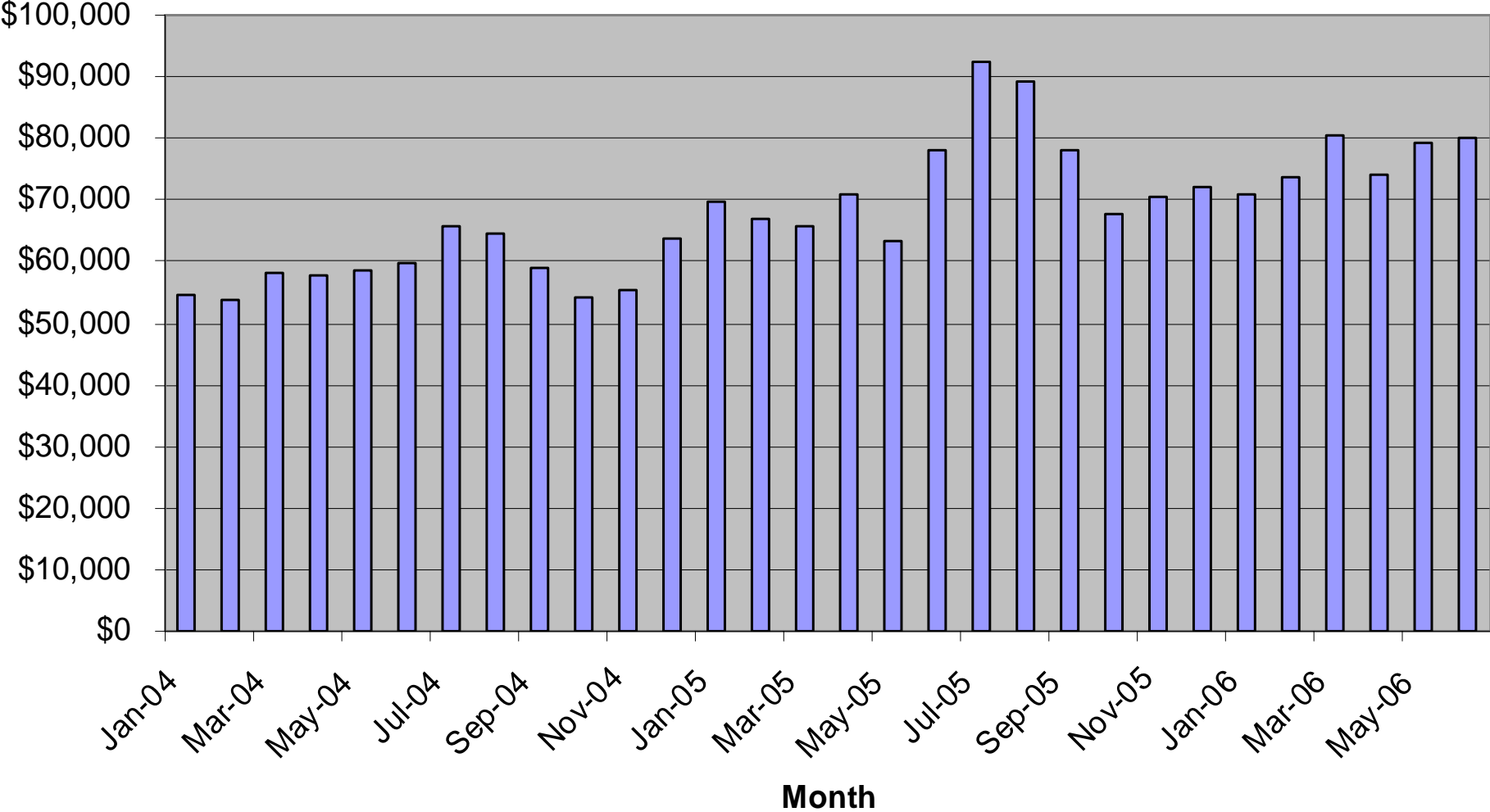
Power Cost as % of Revenue



Revenue per kWh Sold



Monthly Power Cost - SPA



City Utilities Large Power Rate Schedule

Customer Charge: \$150.00 per month

Energy Charge: \$.0291 per kWh

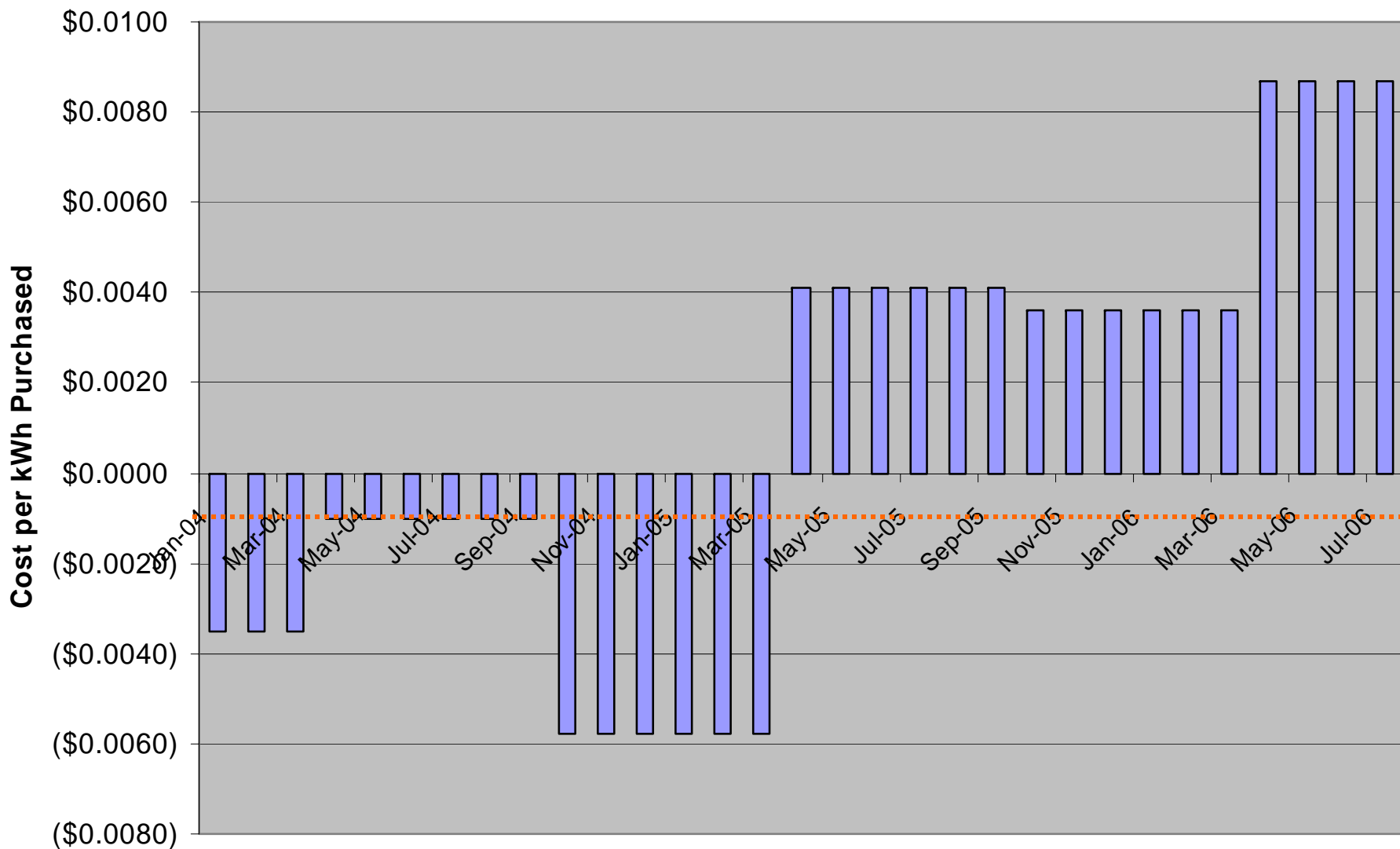
Demand Charge: \$3.31 /kW

Scheduling Charge: 5% adder

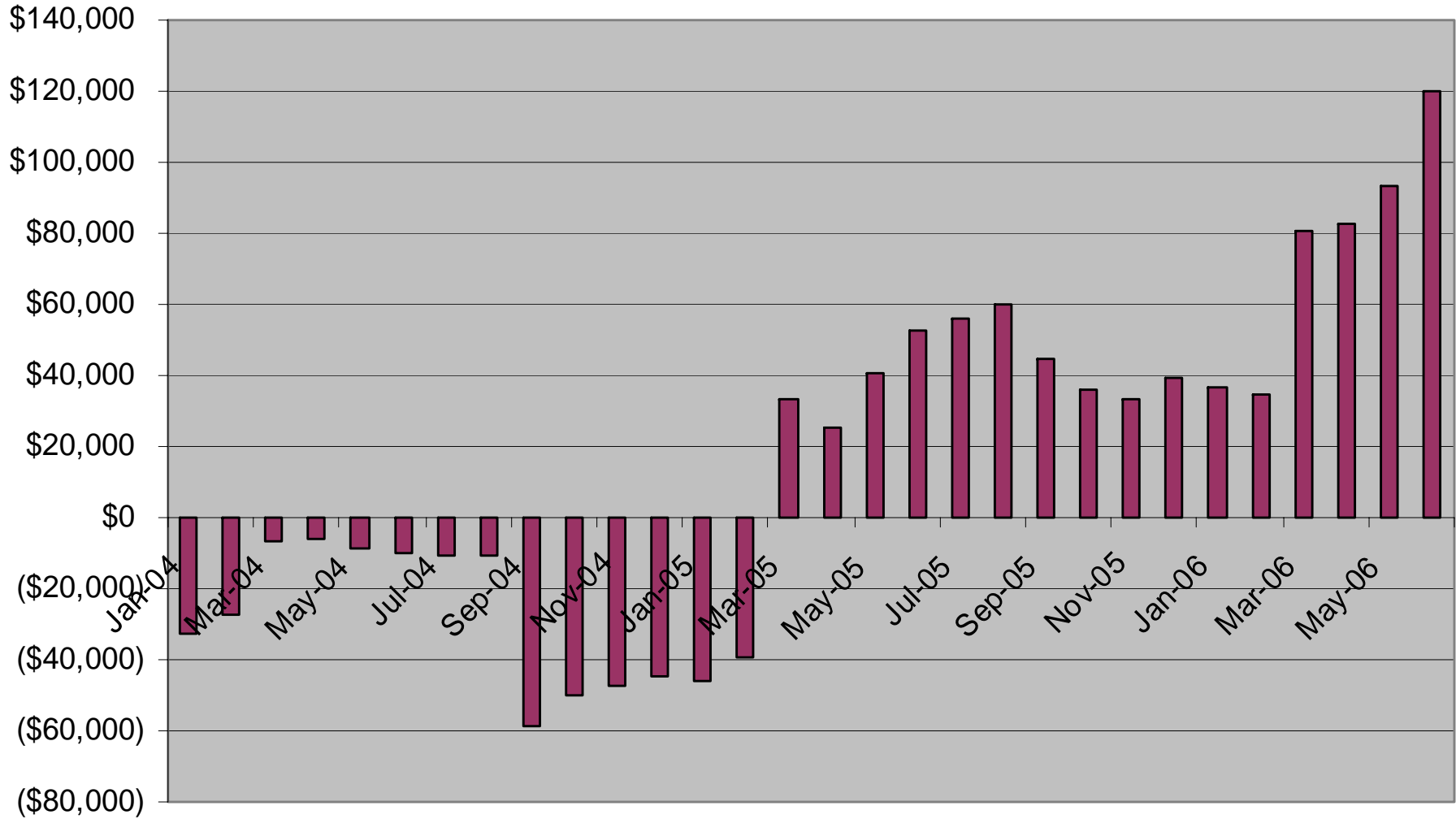
Energy Cost Adjustment: **varies**

Note: All the same charges as in 2004 rates

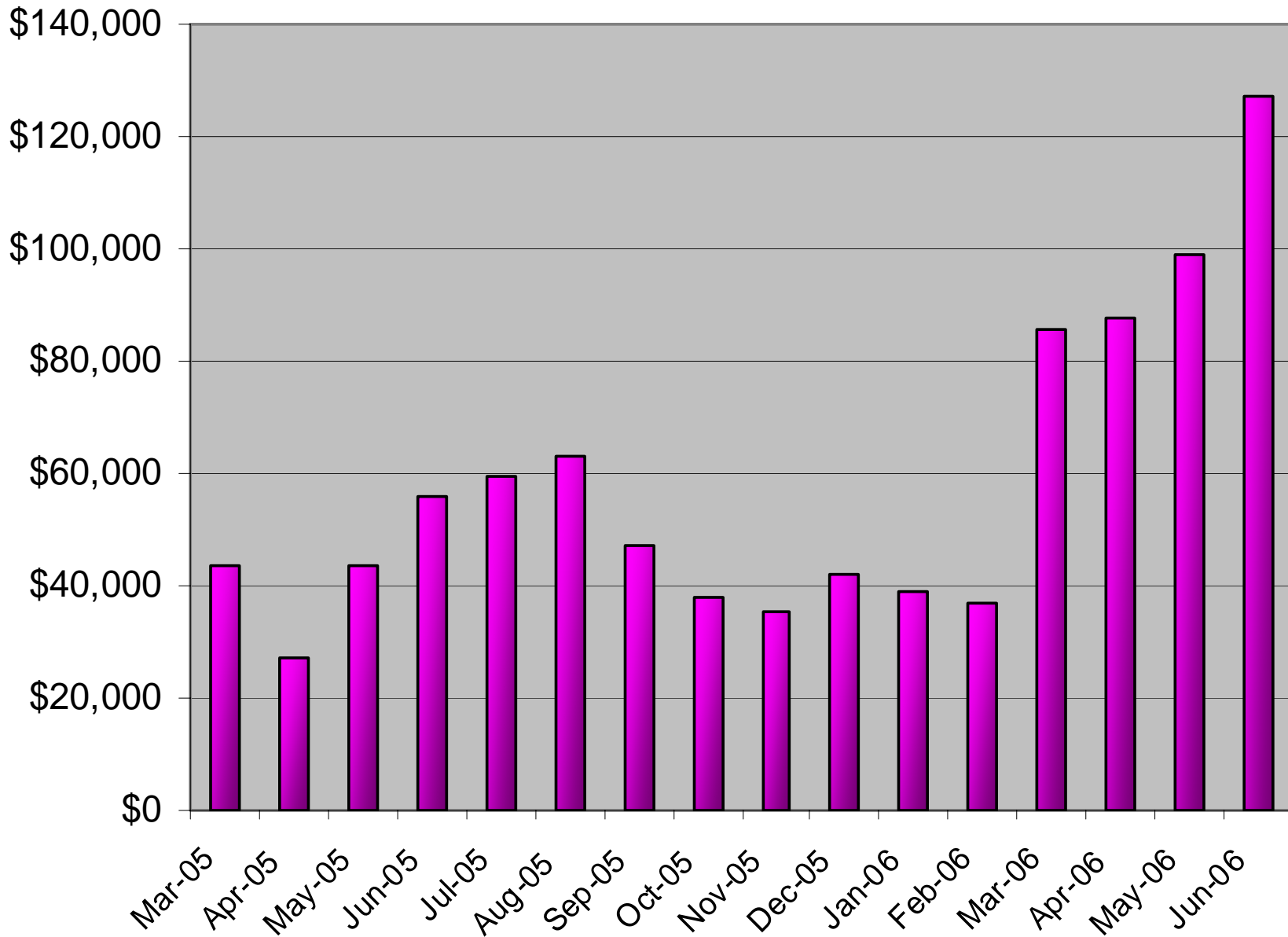
Historic C.U. Fuel Adjustments



Monthly C.U. Fuel Adjustment



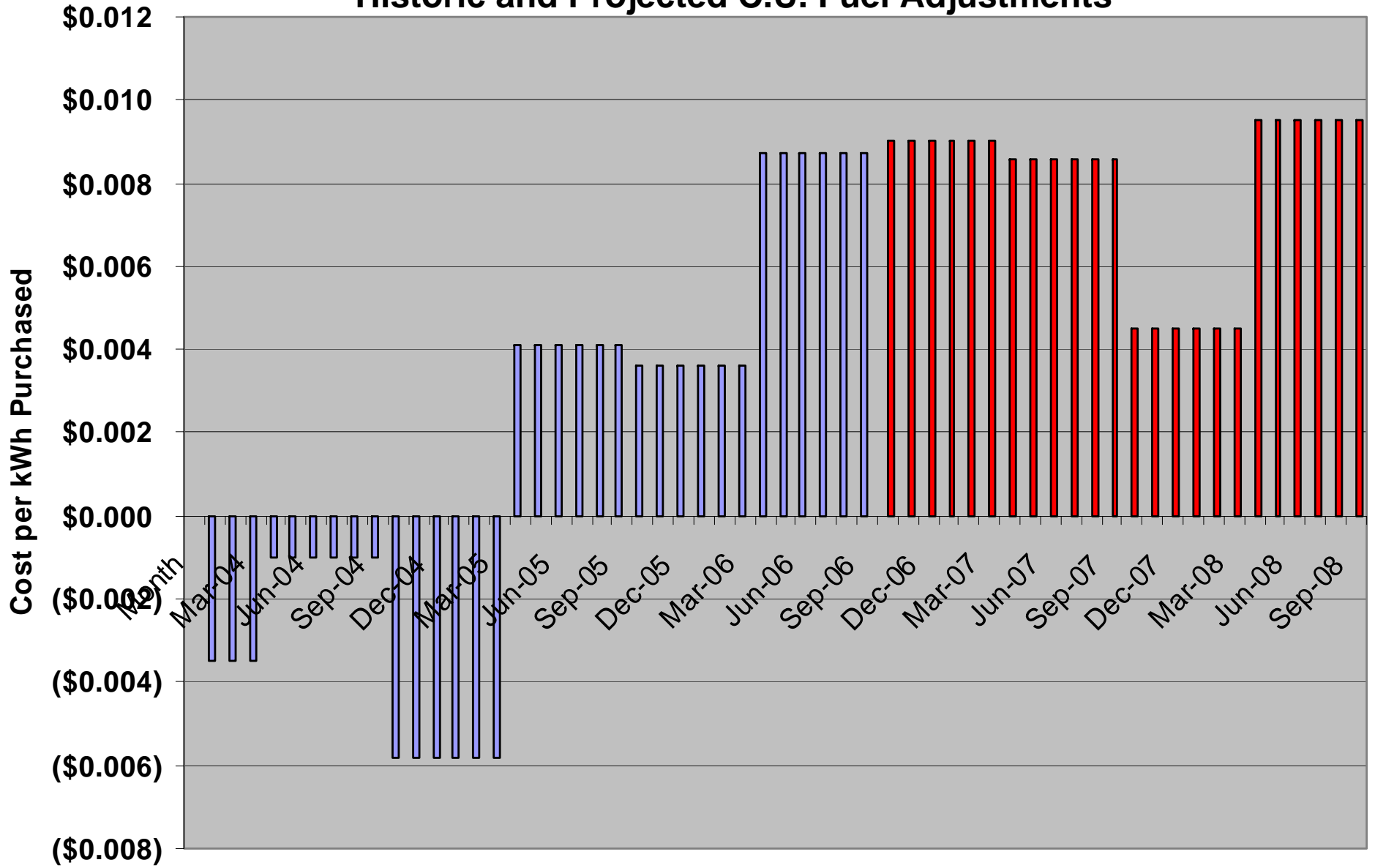
C.U. Fuel Adjustment Charges Absorbed Since Mar 05



Total C. U. Fuel Adjustment Absorbed Since March 2005



Historic and Projected C.U. Fuel Adjustments



Options:

1. Leave retail rates as is. Add an **Energy Cost Adjustment** into Nixa's retail rate charges to pass thru to consumers the ECA charged Nixa by City Utilities.
2. Increase **retail rates** to recover current level of wholesale power costs (including projected Energy Adj. Factor from C.U. of roughly \$.009/kWh).
3. Same as No. 2 above, and also establish an Energy Cost Adjustment charge initially established at a level which would likely generate small credits to customers. This would protect the City from absorbing future Fuel-related cost increases.
4. Any of the above with a "**Cost of Wholesale Power Adjustment**" to replace the "Energy Cost Adjustment". This would allow the City to collect for any increases in energy and capacity-related charges from City Utilities and SPA.